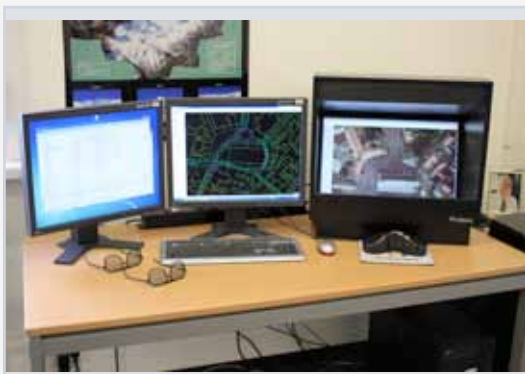
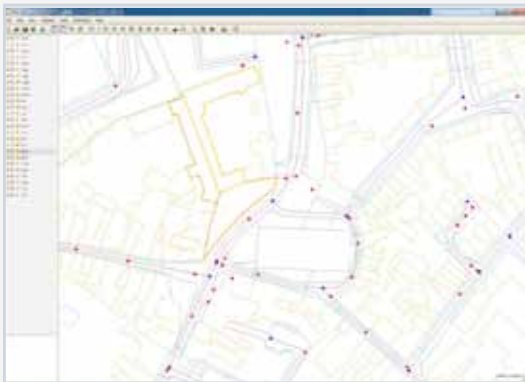
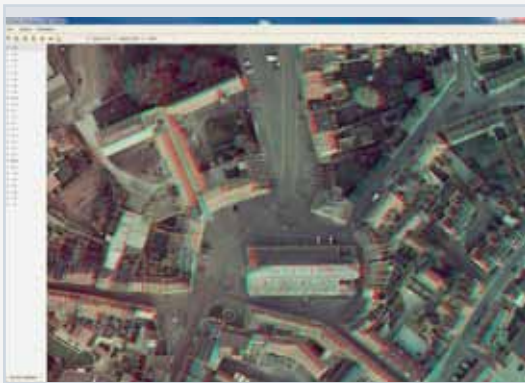


## FULL PRODUCTION UNIT



*Strabo integrates GIS with cutting edge photogrammetric processing and stereo viewing.*



## DIGITAL PHOTOGRAMMETRY - THE SMART WAY

*The Strabo Photogrammetry Suite brings fast, accurate and low-cost production to your offices. This intuitive range of tools opens the world of map making on every desktop and meets the expectations of modern photogrammetric production.*

*The Strabo Product Family covers the needs of modern digital photogrammetry. Strabo comes in different parts, each as extension to Orbit GIS: the Project Manager, the Softcopy module, Aerial Triangulation Package, Bundle Adjustment, DEM creation module and Orthomosaicing tool.*

## ORBIT GIS EMPOWERED EXTENSION

As an extension to Orbit GIS, Strabo has access to all standard GIS functionalities available in the Orbit GIS products. This results in high productivity and extensive interactive power for every user. Photogrammetric results are automatically enabled within a network/internet enabled Orbit GIS environment.

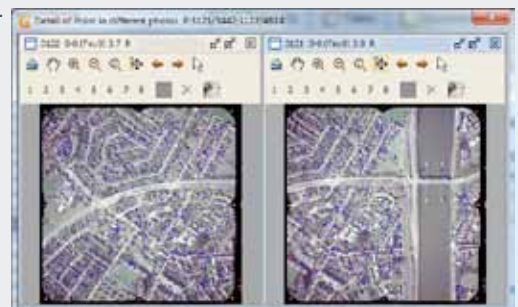
## STRABO PROJECT MANAGER

In Strabo, photogrammetric work is organized in projects. The project manager bundles all information on a project in a single file. Using a handy wizard, you can easily manage the project and make it available for the other Strabo tools. An overview of photo locations, with or without thumbnails of the photos, is presented in the Orbit GIS 2D map view. The Project Manager also manages the access of photo data in multiresolution formats for fast access; imagery can be reached wherever on your network. Individual EO parameters can be edited.

Scanned imagery as well as all digital camera based imagery is supported (e.g. Vexcel, DMC, Visionmap A3)

## AUTOMATED BUNDLE BLOCK ADJUSTMENT

The Automatic Tiepoint Detection procedure feeds a project with the necessary corresponding image points to perform a Bundle Block Adjustment. The procedure is supported with blunder detection tools.



## STRABO STEREO EXPLORER

The Strabo Stereo Explorer module is available separately, and requires only a project file and access to image files to operate. The Stereo Explorer allows stereoviewing in Anaglyph, StereoGraphics® and Strabox® mode. The Anaglyph mode runs on every desktop without hardware requirements.



Main features :

- Anaglyph Stereoviewing on Windows, Mac, Linux
- StereoGraphics® Stereoviewing and DTI 3D autostereoscopic Displays, 3D Vision.
- Strabox® Stereoviewing on Windows and Mac
- support for DTI 3D Autostereoscopic Displays
- automatic switch between stereopairs
- seamless zoom and roam through complete coverage
- control X,Y,Z using normal 3-button mouse
- deploy imagery data on each PC and workstation
- optimized for large image files and full screen viewing
- automated image correction using histograms
- share resources using integrated client/server technology
- specify height value for superimposed XY datasets
- stand-alone consultancy, publishing or educational tool
- calculate Relative Orientation based on the available tiepoints
- synced viewing with Orbit GIS 2D map view
- superimposition of 3D and 2D datasets.

## STRABO SOFTCOPY

For registration of data, Strabo Softcopy uses the editing tools of Orbit GIS, making both GIS and Photogrammetry quite simple, intuitive and similar to operate.

Strabo Softcopy is operated with system mouse or specialized 3D mouse to control position and function keys to register data. The integration with Orbit GIS gives access to all interactive editing tools for post-processing and management. The use of an Enterprise Orbit Server system (EOS) allows people to share a single project in real-time, making Strabo a client-server and even internet based production environment.

Main Features are:

- all features of Strabo Stereo Explorer
- registration of vector objects using XYZ co-ordinates.
- softcopy tools integrated with GIS tools
- semi-automatic DEM creation
- DEM breaklines registration and integration
- as extension to Orbit GIS, Strabo Softcopy incorporates full GIS capabilities.

## VISIONMAP A3 IMAGERY SUPPORT

Strabo supports all digital imagery and also the Visionmap A3 images. A dedicated format driver takes care of this special type of imagery.



## DEM, TIN, BREAKLINES, MOSAÏC, CUTLINES, ORTHO RECTIFICATION AND CONTOURS

The DEM tool allows for semi-automatic creation of a DEM pointcloud to create a TIN model. Use Strabo Softcopy for the registration of Breaklines as a 3D polyline dataset. The orthorectification tool rectifies each photo using the specified TIN model and Breaklines dataset.

Mosaïcing can be executed using the Mosaïc Editor supported with an automatic cutlines engine & and color balancing procedures. Automatic Contour Creation can be executed from the same TIN model and Breaklines set.

